

**PORTFOLIO**  
**DESIGN SERVICES INC**  
**ARCHITECTS**  
 2340 NORTH LEDGINGTON AVENUE  
 SUITE 100  
 (651) 631-1500 • FAX (651) 631-5000  
 © 2005 - PORTFOLIO DESIGN SERVICES INC.

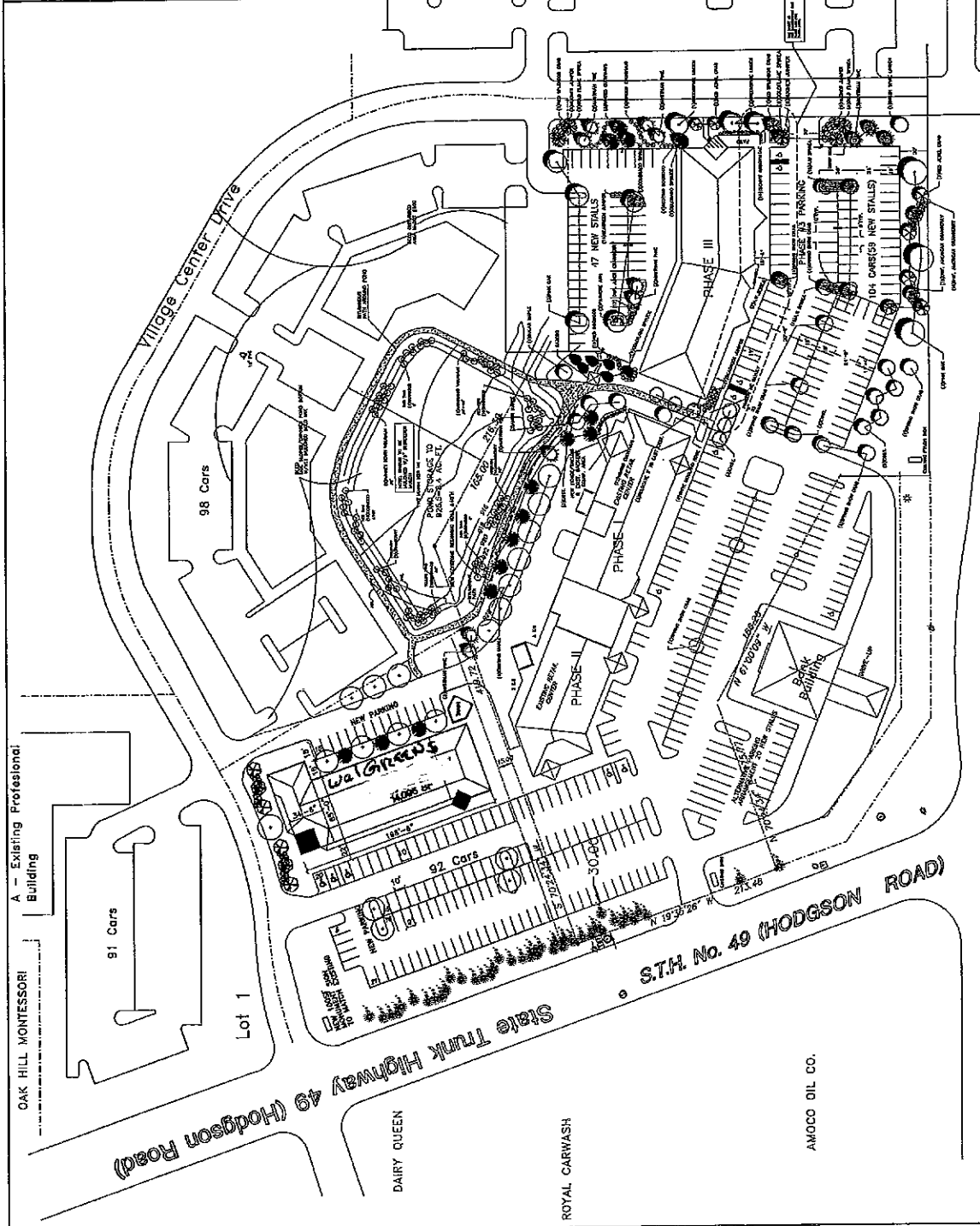
ARCHITECT  
 PORTFOLIO DESIGN SERVICES INC.  
 PLAN AND SPECIFICATION WAS  
 PREPARED BY ARCHITECT AND  
 ENGINEER LICENSE NO. 100000000  
 IN A CITY INCORPORATED  
 IN THE STATE OF MINNESOTA  
 AS SHOWN BY THE HUNDRED  
 YEAR.

DATE	08/07/05
SCALE	AS NOTED
DRAWN BY	
CHECKED BY	
DATE	08/07/05
SCALE	AS NOTED
DRAWN BY	
CHECKED BY	

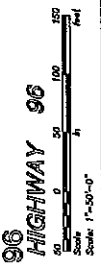
Site Plan  
 North Oaks, MN  
 Highway 96 & Hodgson Road

**SP-1**  
 SHEET 1

WET MEADOW SEED MIX(W/M)	4.0	9.5 Lbs./acre
COMMON LAUREL	5.0	
ANNUAL RYE	12.0	
PERENNIAL RYE	5.0	
ALSKA CLOVER		
MIX A		
(SEE BELOW)		
NATIVE SEED MIX A	4.0	9.25 Lbs./acre
510 BALUSTINA	4.0	
SWITCH GRASS	0.25	
NEW ENGLAND ASTER	0.25	
BLUE VERNIAN	0.25	



Overall Site Plan & Concept Landscaped Plan



OAK HILL MONTESSORI Building  
 A - Existing Professional Building

91 Cars

Lot 1

Walgreens  
 92 Cars

DAIRY QUEEN

ROYAL CARWASH

AMOCO OIL CO.

State Trunk Highway 49 (Hodgson Road)  
 S.T.H. No. 49 (HODGSON ROAD)