

WET MEADOW SEED MIX(WM)	
COMMON NAME	
WILD MILLET	5.0
ANNUAL RYE	5.0
PERENNIAL RYE	12.0
ALSIKE CLOVER	5.0
NATIVE SEED MIX A (SEE BELOW)	9.5
	<hr/> 36.5 Lbs/acre

NATIVE SEED MIX A	
BIG BLUESTEM	4.0
SWITCH GRASS	4.0
FOX SEDGE	1.0
NEW ENGLAND ASTER	0.25
BLUE VERVAIN	0.25
	<hr/> 9.25 Lbs/acre

PORTFOLIO
 DESIGN SERVICES INC
ARCHITECTS
 2340 NORTH LEXINGTON AVENUE
 ROSELVILLE, MN 55113
 (651) 631-1500 • FAX (651) 631-1500
 www.portfoliodesign.com
 © 2003 - PORTFOLIO DESIGN SERVICES, INC.

ARCHITECT
 I HEREBY CERTIFY THAT THIS
 PLAN AND SPECIFICATION WAS
 PREPARED BY ME OR UNDER MY
 DIRECT SUPERVISION AND THAT
 I AM A DULY REGISTERED
 ARCHITECT UNDER THE LAWS
 OF THE STATE OF MINNESOTA
 AS SIGNIFIED BY MY HAND AND
 SEAL.

SEAL

REVISIONS

North Oaks Village Center
 Highway 96 & Hodgson Road
 North Oaks, MN
 Site Plan

DATE
 01.07.03

SCALE
 AS NOTED

DRAWN BY

CHECKED BY

SP-1

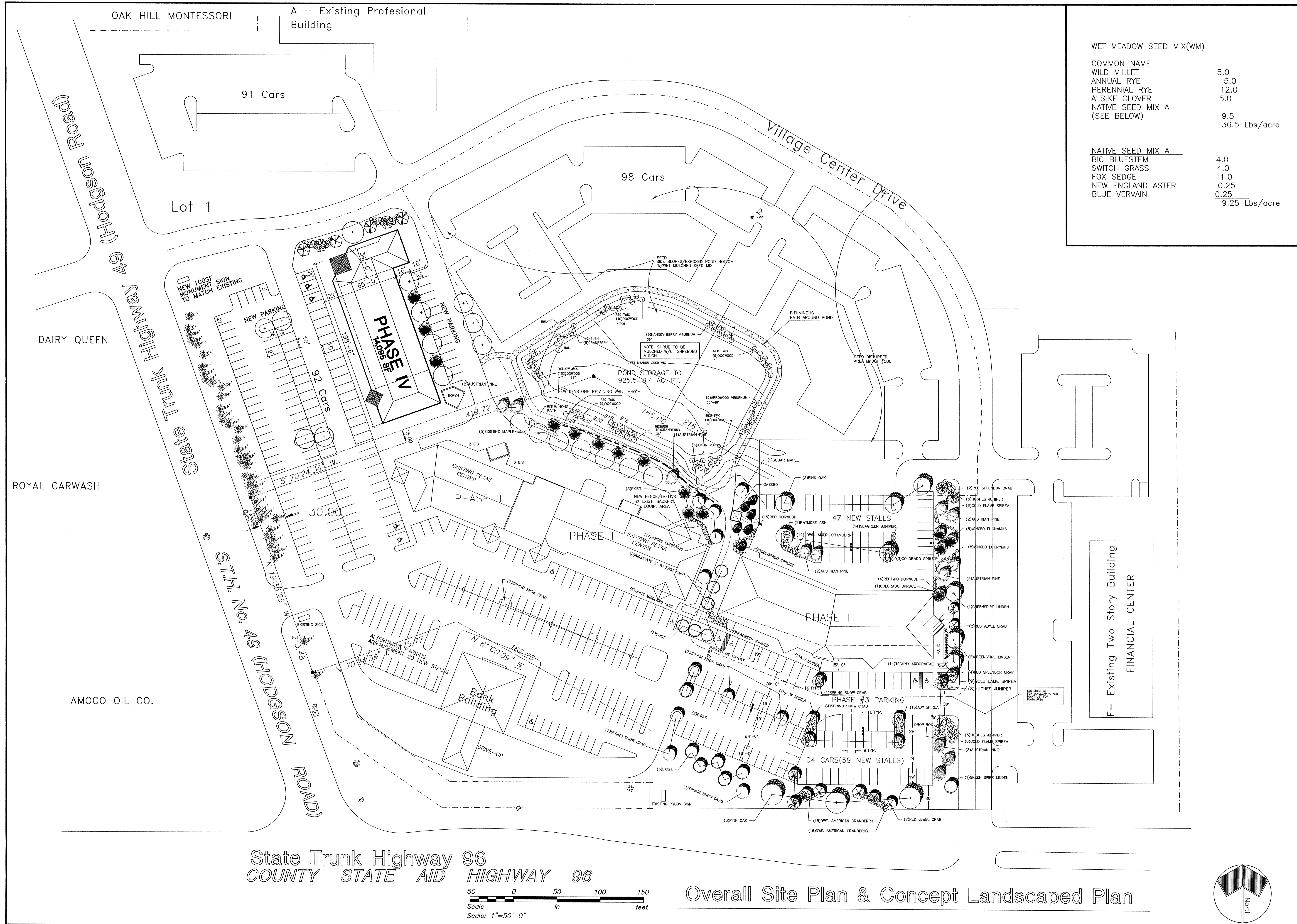
JOB #



State Trunk Highway 96
 COUNTY STATE AID HIGHWAY 96
 Scale: 1"=50'-0"

Overall Site Plan & Concept Landscaped Plan

North Oaks
Site Plan - Extern Complex



WET MEADOW SEED MIX(WM)	
COMMON NAME	
WILD MILLET	5.0
ANNUAL RYE	5.0
PERENNIAL RYE	12.0
ALSIKE CLOVER	5.0
NATIVE SEED MIX A (SEE BELOW)	9.5
	36.5 Lbs/acre

NATIVE SEED MIX A	
COMMON NAME	
BIG BLUESTEM	4.0
SWITCH GRASS	4.0
FOX SEDGE	1.0
NEW ENGLAND ASTER	0.25
BLUE VERVAIN	0.25
	9.25 Lbs/acre

PORTFOLIO
DESIGN SERVICES INC
ARCHITECTS
2340 NORTH LEXINGTON AVENUE
ROSELLE, MN 55113
(651) 631-1300 • FAX (651) 631-1500
www.portfoliodesign.com
© 2003 - PORTFOLIO DESIGN SERVICES, INC.

ARCHITECT
I HEREBY CERTIFY THAT THIS PLAN AND SPECIFICATION WAS PREPARED BY ME OR UNDER MY DIRECT SUPERVISION AND THAT I AM A DULY REGISTERED ARCHITECT UNDER THE LAWS OF THE STATE OF MINNESOTA AS SIGNIFIED BY MY HAND AND SEAL.

SEAL
REVISIONS

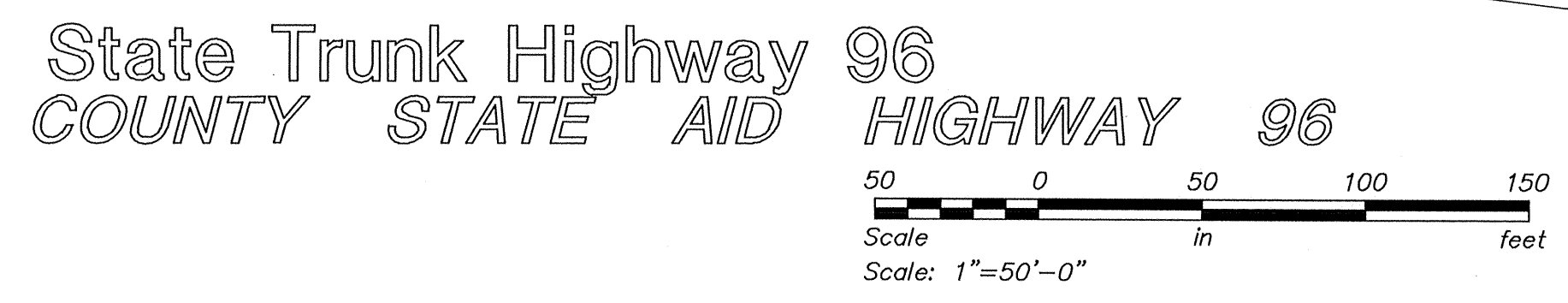
North Oaks Village Center
Highway 96 & Hodgson Road
North Oaks, MN

Site Plan

DATE	01.07.03
SCALE	AS NOTED
DRAWN BY	---
CHECKED BY	---

SP-1

JOB #



Overall Site Plan & Concept Landscaped Plan

