

PLANTING NOTES

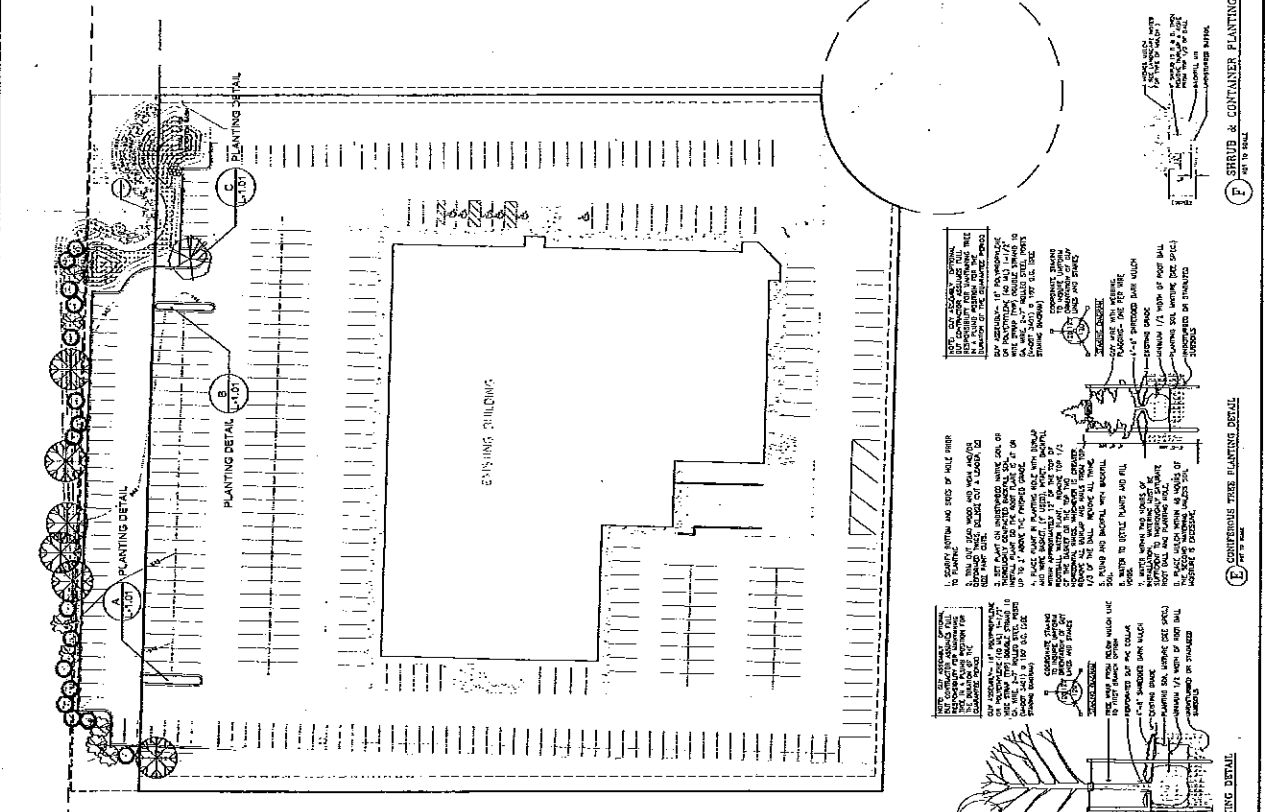
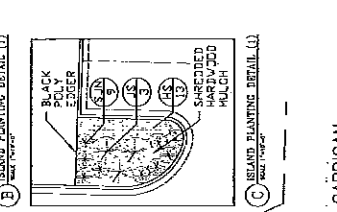
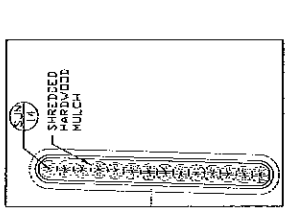
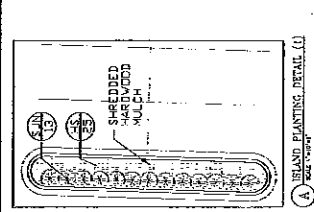
1. ALL PLANTS MUST BE HEALTHY, MATURE, NATURAL SPECIES OF MINNESOTA. PLANTS MUST BE PLANTED IN THE LANDSCAPE AS SHOWN ON THIS PLAN. PLANTS MUST BE PLANTED IN THE LANDSCAPE AS SHOWN ON THIS PLAN. PLANTS MUST BE PLANTED IN THE LANDSCAPE AS SHOWN ON THIS PLAN.
2. ALL TREES MUST BE TRUNK THICKNESS AND FULL HEADED AND PLANTED IN THE LANDSCAPE AS SHOWN ON THIS PLAN.
3. THE LANDSCAPE ARCHITECT RECOMMENDS THE RIGHT PLANT SPECIES FOR EACH SITE AND RECOMMENDS THE RIGHT PLANT SPECIES FOR EACH SITE AND RECOMMENDS THE RIGHT PLANT SPECIES FOR EACH SITE.
4. NO SUBSTITUTIONS OF PLANT MATERIAL SHALL BE ALLOWED UNLESS APPROVED IN WRITING BY THE LANDSCAPE ARCHITECT.
5. PLANTS MUST BE PLANTED IN THE LANDSCAPE AS SHOWN ON THIS PLAN.
6. ALL PLANTS MUST BE PLANTED, MAINTAINED, AND STAGED AS SHOWN IN THE DETAILS.
7. ALL PLANTING AREAS MUST BE COMPLETELY MULCHED AS SPECIFIED IN THE DETAILS.
8. ALL PLANTING AREAS MUST BE COMPLETELY MULCHED AS SPECIFIED IN THE DETAILS.
9. ALL PLANTING AREAS MUST BE COMPLETELY MULCHED AS SPECIFIED IN THE DETAILS.
10. ALL PLANTING AREAS MUST BE COMPLETELY MULCHED AS SPECIFIED IN THE DETAILS.
11. ALL PLANTING AREAS MUST BE COMPLETELY MULCHED AS SPECIFIED IN THE DETAILS.
12. ALL PLANTING AREAS MUST BE COMPLETELY MULCHED AS SPECIFIED IN THE DETAILS.
13. ALL PLANTING AREAS MUST BE COMPLETELY MULCHED AS SPECIFIED IN THE DETAILS.
14. ALL PLANTING AREAS MUST BE COMPLETELY MULCHED AS SPECIFIED IN THE DETAILS.
15. ALL PLANTING AREAS MUST BE COMPLETELY MULCHED AS SPECIFIED IN THE DETAILS.
16. ALL PLANTING AREAS MUST BE COMPLETELY MULCHED AS SPECIFIED IN THE DETAILS.
17. ALL PLANTING AREAS MUST BE COMPLETELY MULCHED AS SPECIFIED IN THE DETAILS.
18. ALL PLANTING AREAS MUST BE COMPLETELY MULCHED AS SPECIFIED IN THE DETAILS.
19. ALL PLANTING AREAS MUST BE COMPLETELY MULCHED AS SPECIFIED IN THE DETAILS.
20. ALL PLANTING AREAS MUST BE COMPLETELY MULCHED AS SPECIFIED IN THE DETAILS.
21. ALL PLANTING AREAS MUST BE COMPLETELY MULCHED AS SPECIFIED IN THE DETAILS.
22. ALL PLANTING AREAS MUST BE COMPLETELY MULCHED AS SPECIFIED IN THE DETAILS.
23. ALL PLANTING AREAS MUST BE COMPLETELY MULCHED AS SPECIFIED IN THE DETAILS.
24. ALL PLANTING AREAS MUST BE COMPLETELY MULCHED AS SPECIFIED IN THE DETAILS.
25. ALL PLANTING AREAS MUST BE COMPLETELY MULCHED AS SPECIFIED IN THE DETAILS.
26. ALL PLANTING AREAS MUST BE COMPLETELY MULCHED AS SPECIFIED IN THE DETAILS.
27. ALL PLANTING AREAS MUST BE COMPLETELY MULCHED AS SPECIFIED IN THE DETAILS.
28. ALL PLANTING AREAS MUST BE COMPLETELY MULCHED AS SPECIFIED IN THE DETAILS.
29. ALL PLANTING AREAS MUST BE COMPLETELY MULCHED AS SPECIFIED IN THE DETAILS.
30. ALL PLANTING AREAS MUST BE COMPLETELY MULCHED AS SPECIFIED IN THE DETAILS.

LANDSCAPE LEGEND

SYMBOL	DESCRIPTION	PLANT SPECIES	PLANT SIZE	PLANT TYPE	PLANT QUANTITY
[Symbol]	Apple 'Honeycrisp' 'Inferred'	MEDIUM BRANCH MAPLE	2.5'	BB	1
[Symbol]	Ornamental shrub	HORSERADISH PINK BIRCH	3.5'	BB	6
[Symbol]	Plant shrub	BLACK HILLS SPARACK	5'	BB	10
[Symbol]	Shrub	ANTHUS BRILLIANCE BLOSSOMER	1.5'	BB	7
[Symbol]	Shrub	CRABAPPLE BLOSSOMER	1.5'	BB	3
[Symbol]	Shrub	ARJONIA JUNIPER	1.5'	BB	3
[Symbol]	Shrub	SILVER JASMINE 'NIPPON'	1.5'	BB	24
[Symbol]	Shrub	HYDRANGEA	1.5'	BB	12
[Symbol]	Shrub	STRAWBERRY CANDY 'DAILY'	1.5'	BB	24

NOTES

1. SHREDED BARK MULCH TYPICAL IN ALL SHRUB AND GROUND COVER AREAS. EDGER TYPICAL WHERE PLANTING BEDS INTERFACE WITH LAWN.
2. PLANTING BEDS EDGED BLACK PLANKING EDGES OR EDGED FLOWLINE OF MATURE PLANT SIZE OR BED LINE AS SHOWN ON PLAN. EAST PLANTING BETWEEN CURVES. LANDSCAPE ARCHITECT TO APPROVE FINAL BED LAYOUT.
3. ALL PLANTED AREAS TO BE IRRIGATED.
4. 3" BAY 3' OF ALL CURBS.
5. SEED OR SOO ALL DISTURBED AREAS.
6. IN PLANTING AREA PER MCHOT SEEDING SPECIFICATIONS SEEDING MANUAL 2003. ESTABLISH SEED MIXTURE 375 'ECONOMY POND/DITCH' MIX (60 LBS/ACRE) BELOW THE HHL ABOVE THE HHL ESTABLISH SEED MIXTURE 260 'COMMERCIAL TURF' MIX (100 LBS/ACRE).



PLANTING NOTES

1. ALL PLANTS MUST BE HEALTHY, MATURE, NATURAL SPECIES OF MINNESOTA. PLANTS MUST BE PLANTED IN THE LANDSCAPE AS SHOWN ON THIS PLAN.
2. ALL TREES MUST BE TRUNK THICKNESS AND FULL HEADED AND PLANTED IN THE LANDSCAPE AS SHOWN ON THIS PLAN.
3. THE LANDSCAPE ARCHITECT RECOMMENDS THE RIGHT PLANT SPECIES FOR EACH SITE AND RECOMMENDS THE RIGHT PLANT SPECIES FOR EACH SITE.
4. NO SUBSTITUTIONS OF PLANT MATERIAL SHALL BE ALLOWED UNLESS APPROVED IN WRITING BY THE LANDSCAPE ARCHITECT.
5. PLANTS MUST BE PLANTED IN THE LANDSCAPE AS SHOWN ON THIS PLAN.
6. ALL PLANTS MUST BE PLANTED, MAINTAINED, AND STAGED AS SHOWN IN THE DETAILS.
7. ALL PLANTING AREAS MUST BE COMPLETELY MULCHED AS SPECIFIED IN THE DETAILS.
8. ALL PLANTING AREAS MUST BE COMPLETELY MULCHED AS SPECIFIED IN THE DETAILS.
9. ALL PLANTING AREAS MUST BE COMPLETELY MULCHED AS SPECIFIED IN THE DETAILS.
10. ALL PLANTING AREAS MUST BE COMPLETELY MULCHED AS SPECIFIED IN THE DETAILS.
11. ALL PLANTING AREAS MUST BE COMPLETELY MULCHED AS SPECIFIED IN THE DETAILS.
12. ALL PLANTING AREAS MUST BE COMPLETELY MULCHED AS SPECIFIED IN THE DETAILS.
13. ALL PLANTING AREAS MUST BE COMPLETELY MULCHED AS SPECIFIED IN THE DETAILS.
14. ALL PLANTING AREAS MUST BE COMPLETELY MULCHED AS SPECIFIED IN THE DETAILS.
15. ALL PLANTING AREAS MUST BE COMPLETELY MULCHED AS SPECIFIED IN THE DETAILS.
16. ALL PLANTING AREAS MUST BE COMPLETELY MULCHED AS SPECIFIED IN THE DETAILS.
17. ALL PLANTING AREAS MUST BE COMPLETELY MULCHED AS SPECIFIED IN THE DETAILS.
18. ALL PLANTING AREAS MUST BE COMPLETELY MULCHED AS SPECIFIED IN THE DETAILS.
19. ALL PLANTING AREAS MUST BE COMPLETELY MULCHED AS SPECIFIED IN THE DETAILS.
20. ALL PLANTING AREAS MUST BE COMPLETELY MULCHED AS SPECIFIED IN THE DETAILS.
21. ALL PLANTING AREAS MUST BE COMPLETELY MULCHED AS SPECIFIED IN THE DETAILS.
22. ALL PLANTING AREAS MUST BE COMPLETELY MULCHED AS SPECIFIED IN THE DETAILS.
23. ALL PLANTING AREAS MUST BE COMPLETELY MULCHED AS SPECIFIED IN THE DETAILS.
24. ALL PLANTING AREAS MUST BE COMPLETELY MULCHED AS SPECIFIED IN THE DETAILS.
25. ALL PLANTING AREAS MUST BE COMPLETELY MULCHED AS SPECIFIED IN THE DETAILS.
26. ALL PLANTING AREAS MUST BE COMPLETELY MULCHED AS SPECIFIED IN THE DETAILS.
27. ALL PLANTING AREAS MUST BE COMPLETELY MULCHED AS SPECIFIED IN THE DETAILS.
28. ALL PLANTING AREAS MUST BE COMPLETELY MULCHED AS SPECIFIED IN THE DETAILS.
29. ALL PLANTING AREAS MUST BE COMPLETELY MULCHED AS SPECIFIED IN THE DETAILS.
30. ALL PLANTING AREAS MUST BE COMPLETELY MULCHED AS SPECIFIED IN THE DETAILS.

